

Audio/video help

Can't connect to speaker

Please follow the steps below to configure your audio output device on Windows 7, 8 and 10:

Step #1. Right click on the sound icon (next to your clock) and select "Sounds"
Select "Playback" tab



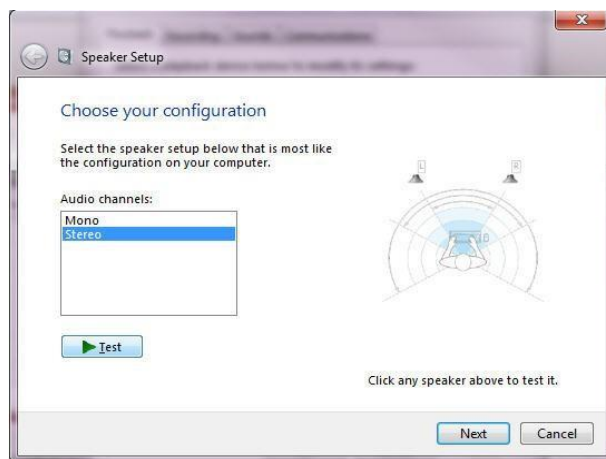
Step #2. Select your output device (Please Note - This will be the same output device you select to use in your Blackboard Collaborate session)



Step #3. Select "Configure"



Step #4. Select "Stereo" or "2.0/2.1 audio"



- 5 Select "Next"
- 6 Select "Next"
- 7 Select "Finish"
- 8 Select "OK"
- 9 Launch your Blackboard Collaborate Session
- 10 Select Tools
- 11 Select Audio
- 12 Select the same output device

