

# NAPLAN 2024

Information for parents/carers of students enrolled in schools of distance education

---

## Introduction

This information sheet is for parents/carers of students enrolled in schools of distance education (SDEs). It outlines the options available for distance education students to access the National Assessment Program — Literacy and Numeracy (NAPLAN) tests.

## NAPLAN

NAPLAN is a national literacy and numeracy assessment that students in Years 3, 5, 7 and 9 sit each year. It assesses the literacy and numeracy skills that students are learning through the school curriculum and allows parents/carers to see how their child is progressing against national standards and over time. More information about NAPLAN is available at [www.nap.edu.au/naplan](http://www.nap.edu.au/naplan).

## Accessing the NAPLAN tests

Students enrolled in SDEs should, wherever possible, complete the NAPLAN tests at a school location, via one of the following two options:

1. attending their enrolled school's campus
2. attending the campus of a local school as a hosted/visiting student.

If a student is unable to attend a school campus because of geographical isolation or a medical condition, they may be eligible to sit the NAPLAN tests off-site.

## Hosted/visiting students

Parents/carers of students who are unable to attend their enrolled school's campus may approach a local school (regardless of year level or educational sector) to request that the student complete the NAPLAN tests as a hosted/visiting student. If the local school's principal approves this request, the student will be permitted to attend this school and complete the NAPLAN tests as per the school's test schedule.

**Note:** Host schools are **not** required to schedule catch-up test sessions for hosted/visiting students. If a student is absent on the day of the scheduled test, they may be marked absent for that test domain.

## NAPLAN off-site test

The NAPLAN off-site test allows eligible students to complete the NAPLAN tests from home.

For a student to be eligible to access the NAPLAN off-site test, they must:

- be enrolled in a Queensland SDE

- be located in Australia at the time of the NAPLAN tests
- have access to a compatible device with suitable internet bandwidth
- be unable to complete the NAPLAN tests at a school campus because of geographical isolation or a medical condition.

**Note:** a student is considered to be geographically isolated if their address at the time of testing is at least 16 km away from the nearest school, regardless of year level or educational sector.

## Off-site test supervision

Students completing the NAPLAN off-site test must have a home educator (parent/carer/delegate) to act in the role of test supervisor, who is available to supervise all test sessions (including practice tests) and has access to a secondary device for communication with the school leading up to and on test days. The contact details of the nominated test supervisor/s are required as part of the application.

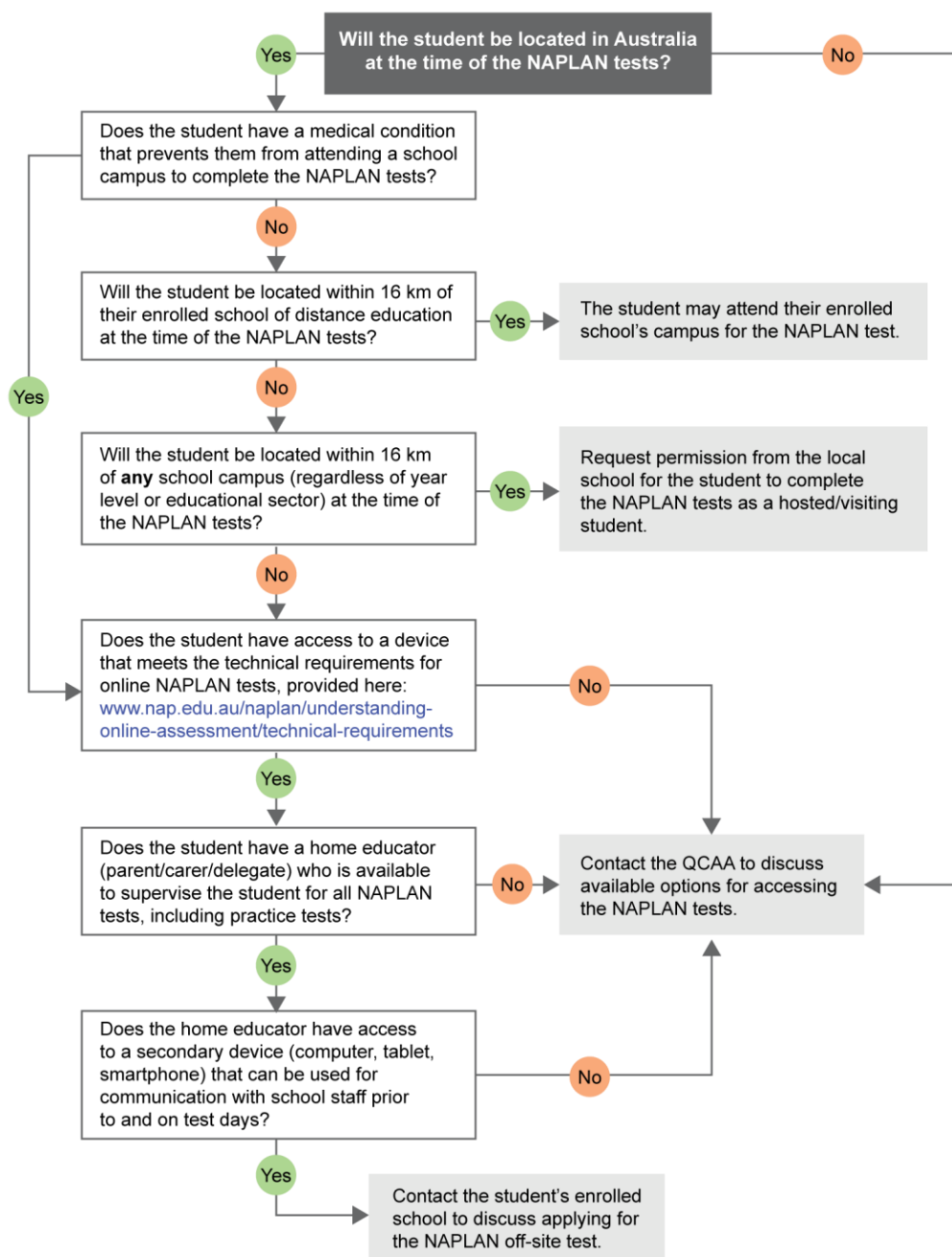
For a student to complete the NAPLAN off-site test, the test supervisor must:

- be available to support and supervise the student on all testing days
- have access to a phone or other suitable device for communicating with the school prior to and on test days (in addition to the device used for student testing)
- sign a *Preparation and confidentiality agreement for administering off-site tests* and return it to the school.

## Expressions of interest

Parents/carers of distance education students who meet the above eligibility criteria may contact their enrolled school to express their interest in accessing the NAPLAN off-site test in 2024. Applications will be submitted to the QCAA by schools on behalf of parents/carers.

The following flow chart provides more information about the available options for distance education students to access the NAPLAN tests in 2024.



## More information

If you would like more information, please contact your school's NAPLAN coordinator or the QCAA NAPLAN Unit by phoning 1300 214 452 or emailing [naplan@qcaa.qld.edu.au](mailto:naplan@qcaa.qld.edu.au).



© State of Queensland (QCAA) 2023

**Licence:** <https://creativecommons.org/licenses/by/4.0> | **Copyright notice:** [www.qcaa.qld.edu.au/copyright](http://www.qcaa.qld.edu.au/copyright) — lists the full terms and conditions, which specify certain exceptions to the licence. |

**Attribution** (include the link): © State of Queensland (QCAA) 2023 [www.qcaa.qld.edu.au/copyright](http://www.qcaa.qld.edu.au/copyright).